

UWS Proxy Settings

What is a proxy?

To assist in controlling internet access costs, UWS uses a proxy server – a server that caches (stores) web pages accessed by staff and students. The next time the page is requested, it will generally be delivered by the proxy server rather than the original site, thus saving on download charges and improving page delivery speeds. Internal (Intranet) sites don't attract download charges and have no need to access the proxy.

Our system has been setup so that any access to external web sites must go via the proxy, or the page won't download. If you're not using the proxy server, you'll find you can access UWS Intranet websites normally, but will get errors when you try to leave UWS.

Although **Microsoft Internet Explorer is the only web browser supported by UWS**, we have included notes on proxy settings for some other popular browsers.

How do we set it up?

If you've been migrated to Layer 3, and only use your computer on the UWS Local Area Network (LAN), you're already setup! The correct proxy settings for your machine are provided as part of the Layer 3 process. Should future changes be required, they will be automatically implemented next time you use your Layer 3 computer on the UWS (LAN). Some Layer 3 users will need to change their Dial-in settings.

However, if you're using a non-Layer 3 computer (no orange "EA Desktop Enabled" sticker), or a non-UWS computer, you'll need to check your settings are correct, and manually change them if necessary.

These settings also apply to the UWS Dial-up (Dial-in) Service – you'll need to have the proxy set correctly on whatever machine you use to dial-in.

NOTE: When connecting via a private Internet Service Provider (ISP), you'll need to set your browser to match your ISP's recommended proxy settings – the UWS proxy won't work with ISP connections. You can set up Internet Explorer so that it knows which proxy to use for which connection – UWS LAN, UWS Dial-in or ISP Dial-in.

it fact sheet #2

Internet Explorer (PC):

Open Internet Explorer.



From the **Tools** menu, choose **Internet Options**. A tabbed window will appear. Click the **Connections** tab.

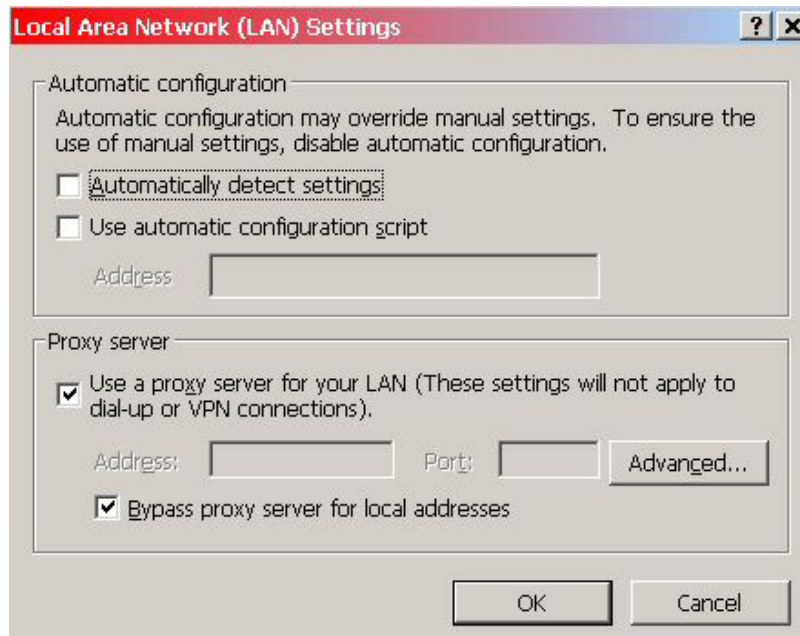


The next steps depend on how you are connecting to the UWS network – through our LAN (plugging directly into a network wall outlet or connecting via a wireless hotspot – in other words, a normal UWS office connection), through UWS dial-in or via a private ISP (Bigpond, Optus, iiNet, etc). Although the process is similar, you need to be in the right place first!

it fact sheet #2

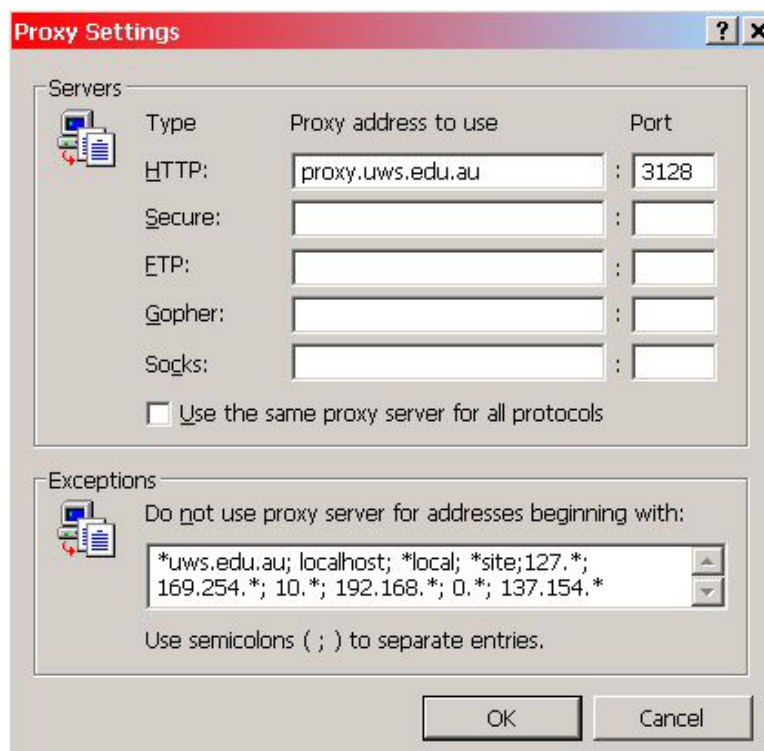
Connecting via the UWS LAN:

From the Connections tab, click the **LAN settings...** button.



As per this example, ensure nothing is ticked under **Automatic Configuration**.

Under **Proxy Server**, ensure **Use a proxy server for your LAN...** and **Bypass proxy server for local addresses** are both ticked, then click the **Advanced...** button. The proxy settings window will open.



it fact sheet #2

Now you need to enter details exactly as shown in the example. Complete the HTTP, Port and Exceptions fields only:

Proxy address to use:

proxy.uws.edu.au

Port:

3128

Exceptions:

uws.edu.au; localhost; *local; *site; 127.*; 169.254.*; 10.*; 192.168.*; 0.*; 137.154.

Do NOT tick Use the same proxy for... Do NOT complete any details in any fields other than those detailed above or you will have problems accessing some sites.

Connecting via UWS Dial-in Services:

From the Connections tab, select your **UWS dial-up account** and click the **Settings...** button. The same settings as for LANs now apply.



NOTE: Changing proxy settings for a dial-up connection in Internet Explorer will not change your LAN proxy settings, nor will it change the settings of other dial-up services you may use. If you use more than one UWS dial-in connection, you will need to make changes to all of them.

it fact sheet #2

Connecting via Private ISP Dial-in Services:

From the Connections tab, select your ISP account. Now follow the instructions provided to you by your ISP. If they don't use a proxy server, just click the **Settings...** button and check nothing is ticked under Automatic configuration or Proxy server.

Internet Explorer (Mac)

Open Internet Explorer. From the **Explorer** menu, choose **Preferences**. A window with a list of options down the left hand side will appear. Open the **Network** option, then **proxies**.

Ensure Web proxy is ticked then click the Settings button.

Enter details exactly as shown. Complete the HTTP, Port and List Sites... fields only:

Address:

proxy.uws.edu.au

Port:

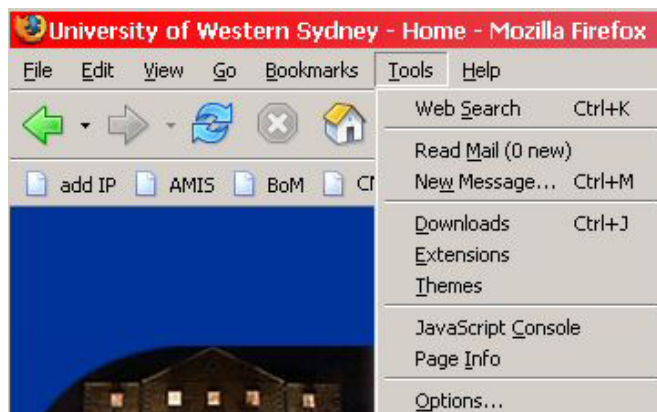
3128

List sites... :

uws.edu.au; localhost; *local; *site; 127.*; 169.254.*; 10.*; 192.168.*; 0.*; 137.154.

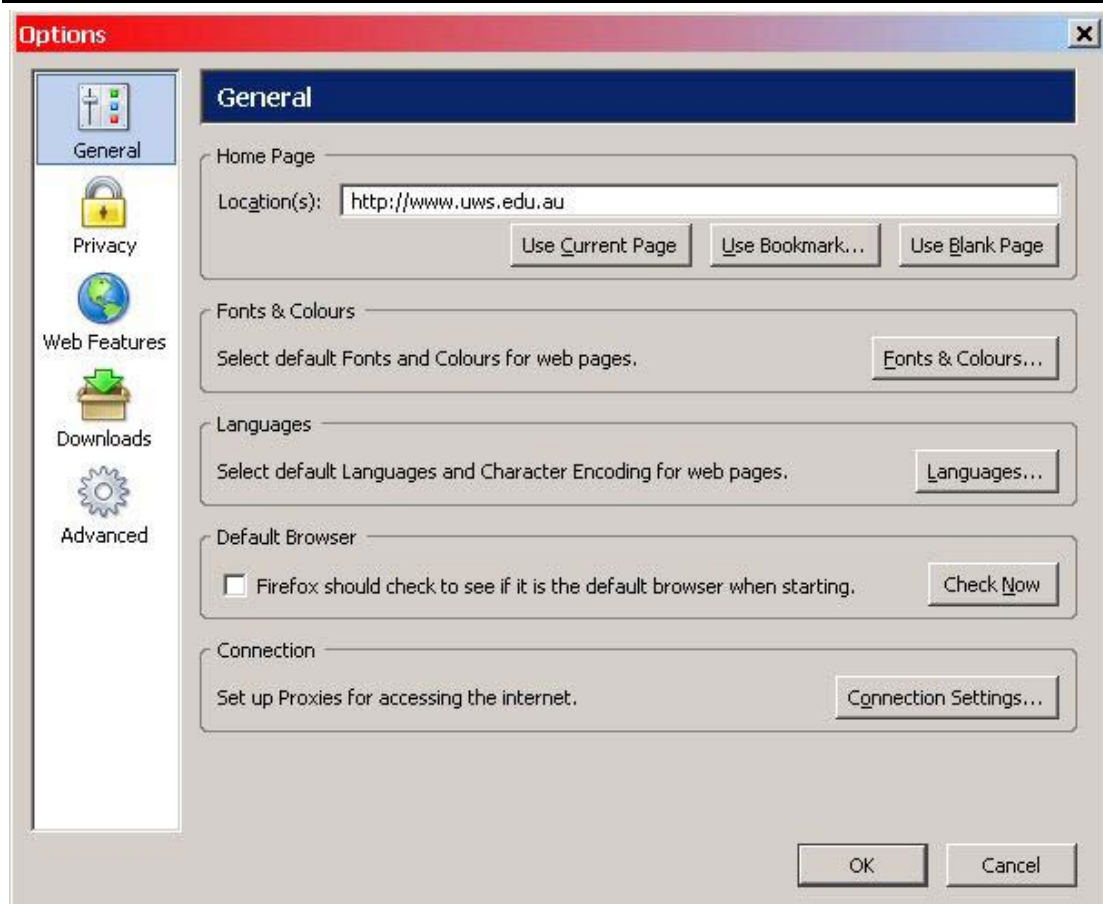
Firefox and Netscape:

Firefox and Netscape use the same menus and options windows. Open Firefox or Netscape.

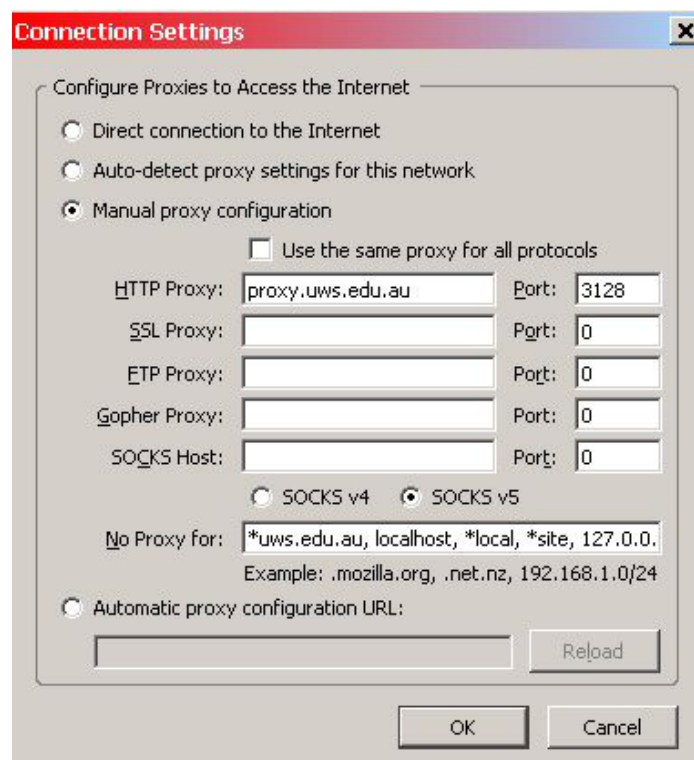


From the **Tools** menu, choose **Options...** A window with icons down the left hand side will appear.

it fact sheet #2



Select the **General** icon. Click the **Connection Settings...** button to open the connection settings window.



it fact sheet #2

Ensure the **Manual Proxy Configuration** radio button is checked and enter details as shown in this example. Complete the HTTP Proxy, Port and “No Proxy for...” fields only. Leave the SOCKS setting at the default.

HTTP Proxy:
proxy.uws.edu.au

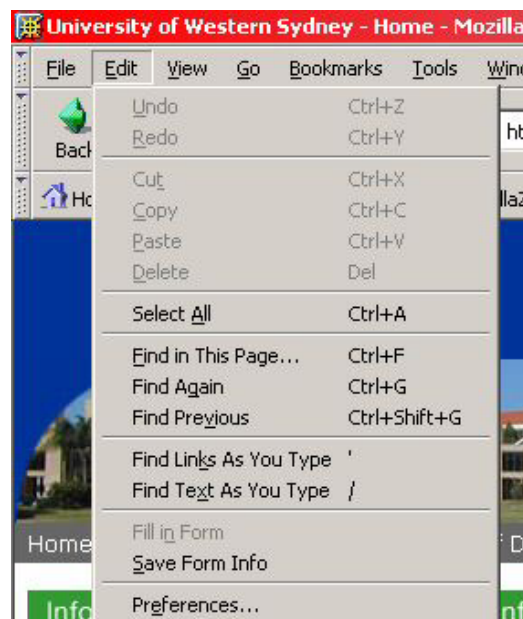
Port:
3128

No proxy for:
***uws.edu.au, localhost, *local, *site, 127.0.0.0/8, 169.254.0.0/16, 10.0.0.0/8, 192.168.0.0/16, 172.16.0.0/12, 0.0.0.0/8, 224.0.0.0/3, 137.154.0.0/16**

Firefox and Netscape don't give the option to have a separate dial-up setting.

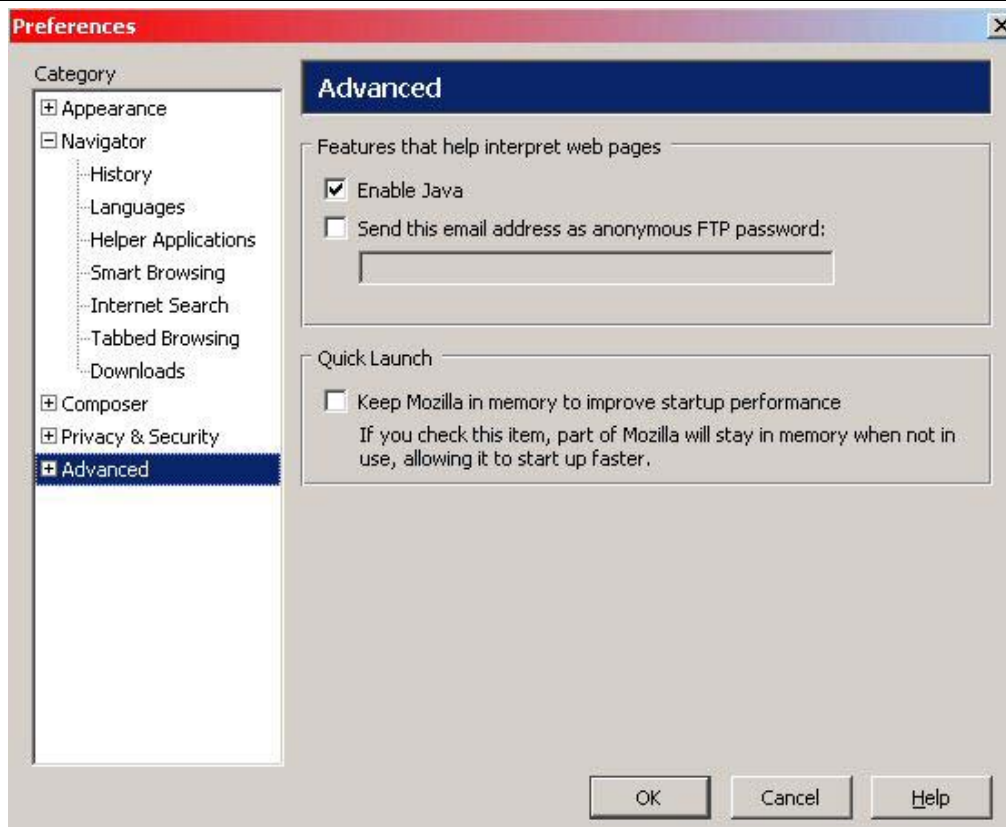
Mozilla:

Open Mozilla.



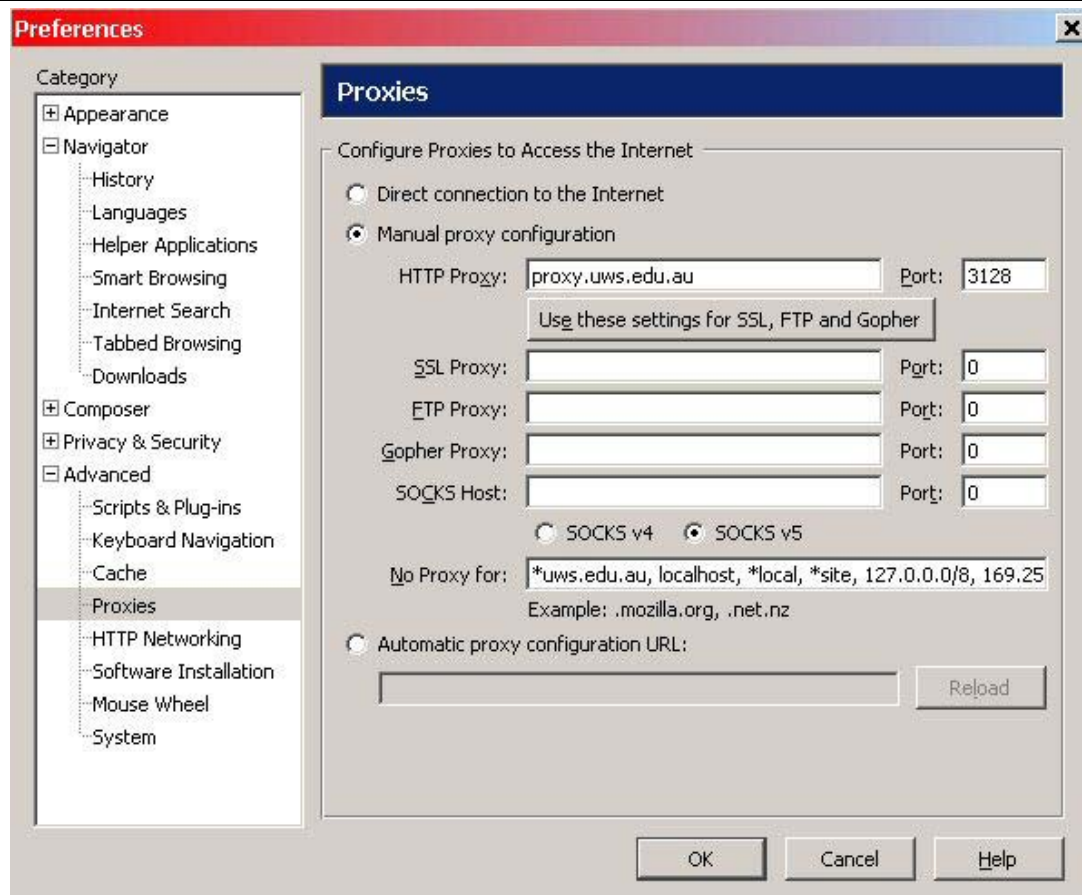
From the **Edit** menu, choose **Preferences...** The preferences window will now appear.

it fact sheet #2



In the list on the left, either double click **Advanced**, or click the + **symbol** next to **Advanced** to expand the list of options. Select **Proxies**, and the right hand side of the window will change to show current proxy settings.

it fact sheet #2



Ensure the **Manual proxy configuration** radio button is checked, and enter details exactly as shown. Complete the HTTP Proxy, Port and “No Proxy for...” fields only. Leave the SOCKS setting at the default.

HTTP Proxy:
proxy.uws.edu.au

Port:
3128

No proxy for:
***uws.edu.au, localhost, *local, *site, 127.0.0.0/8, 169.254.0.0/16, 10.0.0.0/8, 192.168.0.0/16, 172.16.0.0/12, 0.0.0.0/8, 224.0.0.0/3, 137.154.0.0/16**

Mozilla doesn't give an option for separate dial-up settings.

Click **OK**.